

# ONWA®

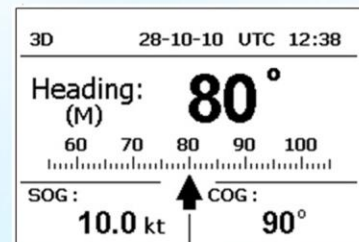
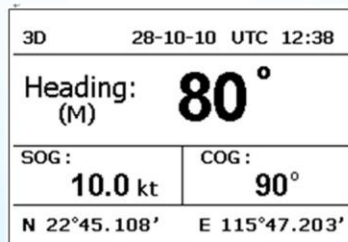
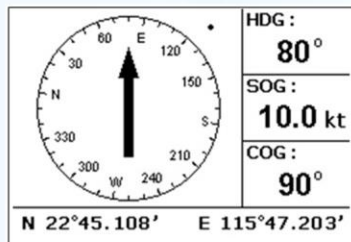
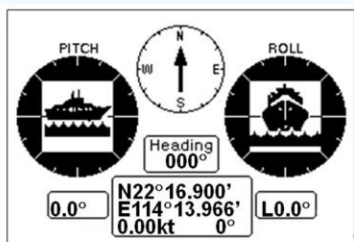
## Marine Electronics

### Model: **KEC-30G (MK2)**

### Electronic GPS/Compass



\*Choice of different heading sensors : Specify when ordering



- Low cost solution, High Accuracy Digital Compass
- KEC30G(MK2) also provides GPS information, Lon/Lat, SOG and COG
- Used with High Accuracy ONWA Marine Heading Sensor KA-GC9A, KA-GC05 or Hemisphere GPS Compass(V102 or V104s)
- Can Correct Magnetic Deviation Manually or Automatically
- Selectable output baud rate and intervals for heading information (HDT, HDM or HDG)
- Output of GPS and heading signal can be interfaced with other equipment on board.
- Waterproof and robust heading sensor suitable for outdoor marine condition.

# SPECIFICATIONS

## Heading Sensors (Choose one below : Specify when ordering)

- KA-GC05
- KA-GC9A
- or Hemisphere GPS Compass(V102 or V104s)

## Power Supply

- Electrical : 10.5 – 40VDC
- Protection : over-current, over-voltage, power transient and accidental reverse polarity protection

## Output / Input (IEC61162-1)

- Input : 2 x NMEA0183
  - a) Input sentences : GGA, GLL, GMS, GNS, GSA, GSV, RMC, VTG, HDT
  - b) Baudrate : auto scan up to 38400
  - c) Support heading/GPS sensor : KA-GC05, KA-GC9A and Hemisphere GPS Compass (V102 and V104s)
- Output : 2 x NMEA0183
  - Port 1 and Port 2(RS232) :
  - a) Output sentences : HDT, HDM and HDG (selectable) and RMC, GSA, GGA, VTG, ZDA (Fixed)
  - b) Heading Output interval selections : 25ms, 100ms, 200ms (default) and 1,000ms
  - c) Output baudrate selections : 4800 (default), 9600, 19200 and 38400 (selectable)

## Environment Conditions

- Ambient temperature
  - Display unit : -15 °C to +55 °C
  - Heading/GPS sensor unit : -2 °C to +70 °C (for KA-GC05 and KA-GC9A)
- Humidity: 93% ±3% on 40 °C
- Waterproofing
  - Display unit : IPX5
  - Heading/GPS sensor unit : IPX7 (for KA-GC05 and KA-GC9A)

## Interconnection

