

# ONWA<sup>®</sup>

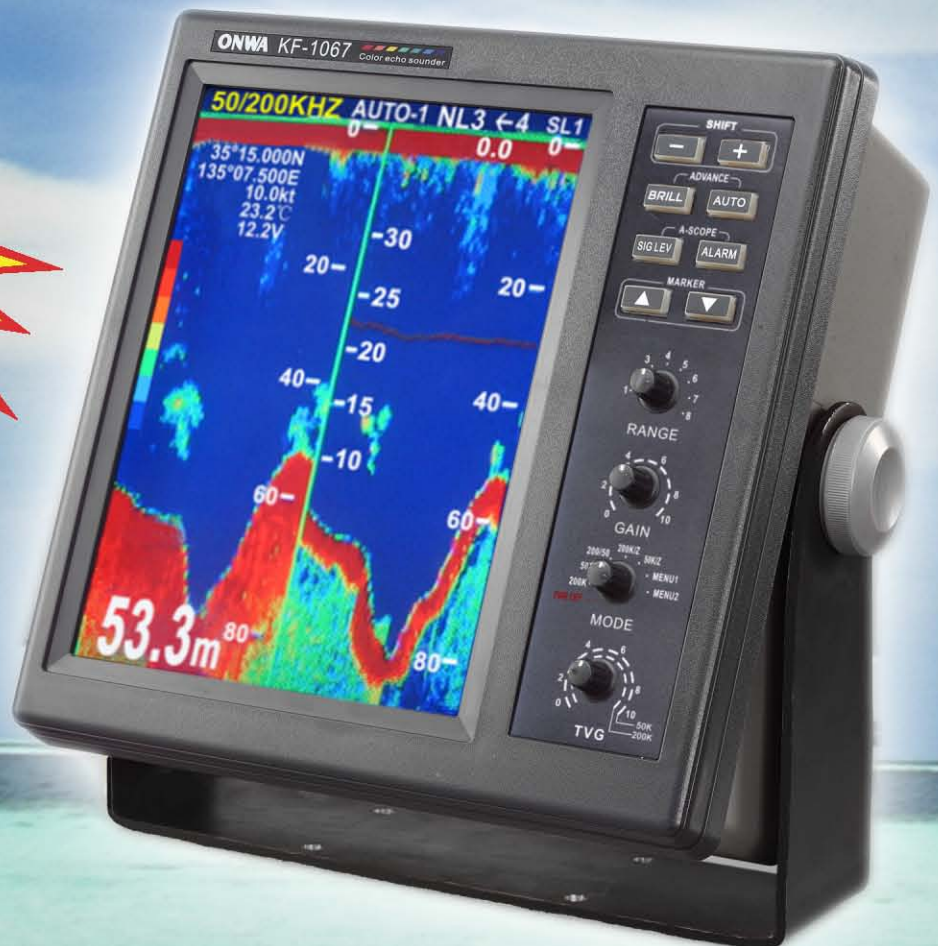
## COLOR ECHO SOUNDER

10.4" TFT Color LCD Display

Model **KF-1067**

- Choice of Frequency: 50KHz, 200KHz or 50 & 200KHz (Dual Frequency), specify when ordering
- Choice of Output Power: 1KW or 2KW, specify when ordering
- 10.4" TFT LCD display with 8-color or multi-level amber presentation
- Auto Mode for hands-off operation
- Variety of display modes: A-scope, bottom-lock expansion, marker zoom and unique bottom zoom displays
- Compound Temperature sensor option

**2KW**  
High Power



# SPECIFICATIONS

## 1.GENERAL

- (1) Display 10.4 " color TFT LCD
- (2) Echo Color 8 colors (including background color) according to echo strength. Monochrome display is also available. The background color is selectable from blue, light blue, white and black.
- (3) Basic Range  
Meters: 5/10/20/40/80/150/300/600  
Feet: 15/30/60/120/200/400/1000/2000  
Fathoms: 3/5/10/20/40/80/150/300  
Passi/Braza: 3/5/10/30/50/100/200/350  
The basic ranges can be changed on the system menu.
- (4) Range Shift Up to 300 meters (1000 feet,150 fathoms,200 Passi/braza)
- (5) Zoom Range Times 2,3,4 and 5 ranges
- (6) Bottom Lock Expansion Range 5/10 meters,10/20 feet,2/5 fathoms,2/5 passi/braza
- (7) Auto Mode Automatic adjustment of range and gain
- (8) Display Mode  
50KHz or 200KHz version: Normal, Zoom and A-scope  
50KHz & 200KHz ( Dual Freq) version: High Frequency (200KHz), Low Frequency (50KHz), Dual (200KHz and 50KHz 1/2 display on each), Zoom (200KHz and 50KHz zoom) and A-scope.
- (9) Zoom Display Marker Zoom, Bottom Zoom and Bottom-lock Expansion
- (10) Display Advance Speed Freeze,1/8,1/4,1/2,1/1,2/1
- (11) TX Frequency 50KHz, 200KHz or 50 & 200KHz (Dual Frequency), specify when ordering
- (12) Output Power 1KW or 2KW rms, specify when ordering.
- (13) Display End Depth (meters)

Display EndDepth(m)	5	10	20	40	80	150	300	600
Pulse-Length(ms)	0.1	0.1	0.1	0.2	0.4	0.7	1.5	2.5
TX Rate	80ms	80ms	80ms	160ms	320ms	560ms	1.2s	2.0s

- (14) Interference Rejecter Rejects unwanted signals by comparing last and present echoes in strength.
- (15) Alarm Fish and Bottom alarms, Temperature alarm (sensor required)
- (16) Input/output data NMEA 0183  
Input RMC, VTG  
Output SDDBT, SDDPT
- (17) Transducer  
1KW TGM60-50B-12L (50KHz, with 12 meters cable)  
TGM50-200B-12L(200KHz, with 12 meters cable)  
2KW TGM60-50A-15L (50KHz, with 15 meters cable)  
TGM50-200A-12L(200KHz, with 12 meters cable)

## 2.POWER SUPPLY

- (1) Display Unit 12-24 VDC (-10%,+30%) : 1.5 - 3.0 A

## 3.ENVIRONMENTAL CONDITION

- (1) Ambient Temperature 0°C to +50°C
- (2) Relative Humidity 85% at 40°C
- (3) Water proofing Display Unit: IPX4
- (4) Vibration  $\pm 1\text{mm} \pm 10\%$ , 2(5) to 13.2Hz,  
Maximum acceleration  $7 \text{ m/s}^2$ , 13.2 to 100Hz

## 4.COATING COLOR

- (1) Display Unit  
Chassis: 2.5GY5/1.5  
Panel: N3.0 Newton No.5

### DISPLAY UNIT

